



# 8 QUEEN'S ROAD EAST

HONG KONG

## ACCESSIBILITY

Close proximity to Admiralty MTR Station

## TYPICAL LETTABLE FLOOR AREA

Approx. 2,744 - 3,854 sq ft (255 - 358 sqm)

## NO. OF OFFICE FLOORS

18

## FLOOR LOADING

Approx. 2.4 kPa (50 lbs / sq ft)

## TRUNKING

Three-compartment floor trunking

## 24-HOUR ACCESS

Octopus Card Key system incorporated with the passenger lifts for controlling access to each office floor after office hours

## AIR-CONDITIONING

Centralised PAU with Fan Coil system

## LIFTS

2 passenger lifts

## TENANTS' STANDBY ELECTRICAL PROVISION

A 180 kVA emergency generator is provided for tenants' essential applications and equipment

## COMPUTER ROOM COOLING

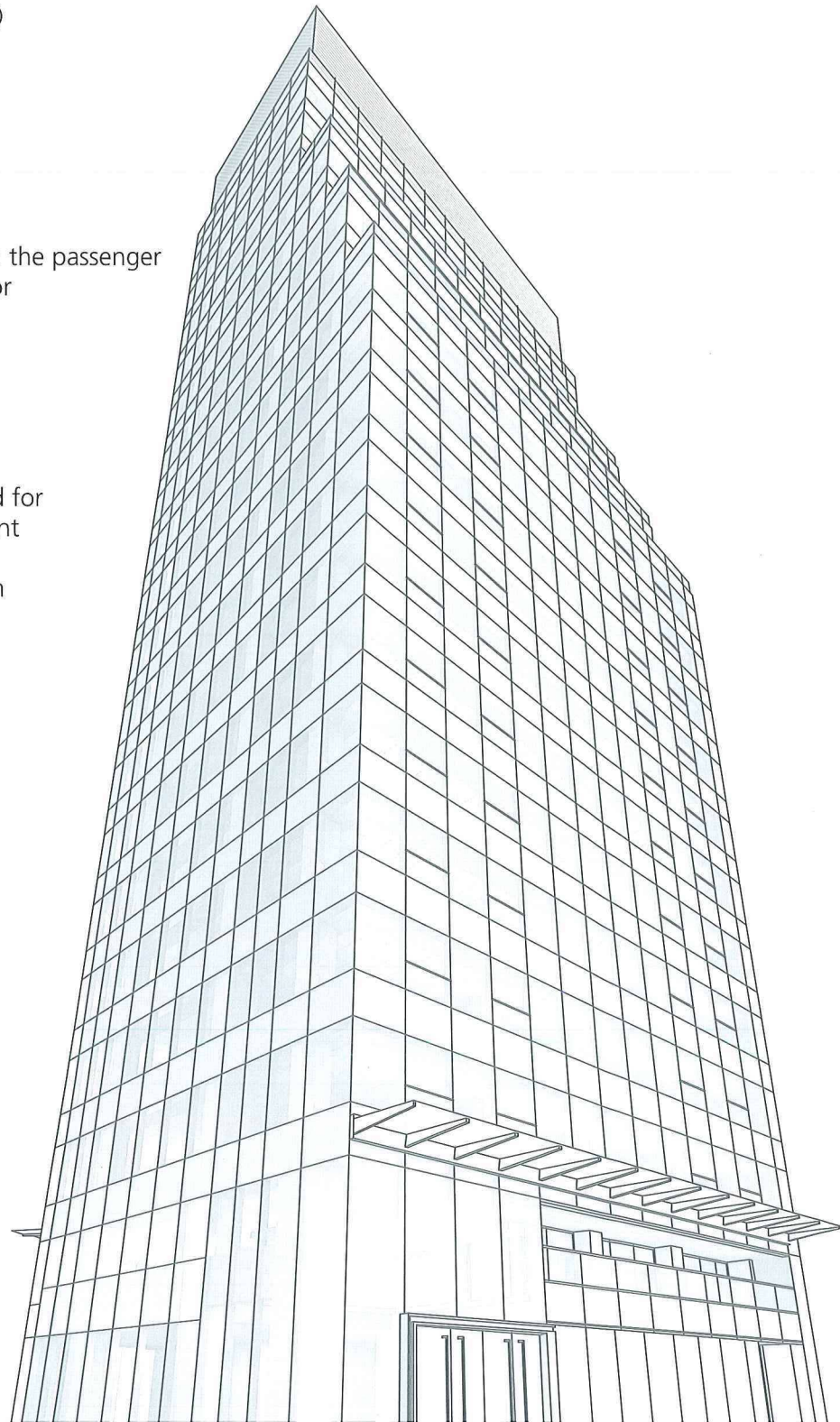
Dedicated 24-hour chilled water supply with backup generator

## TELECOMMUNICATIONS PROVISIONS

- Full Cat.5 cabling
- Access to cable TV and broadband Internet services
- Choice of 2 FTNS operators
- Provisions for tenants' inter-floor cabling

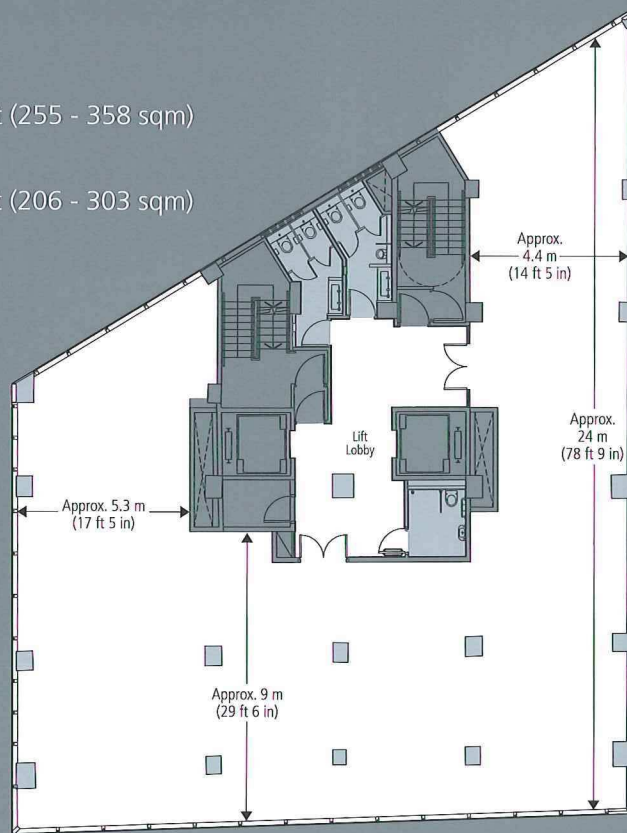
## ACCESSIBLE CAR PARKING SPACES

Available at Three Pacific Place

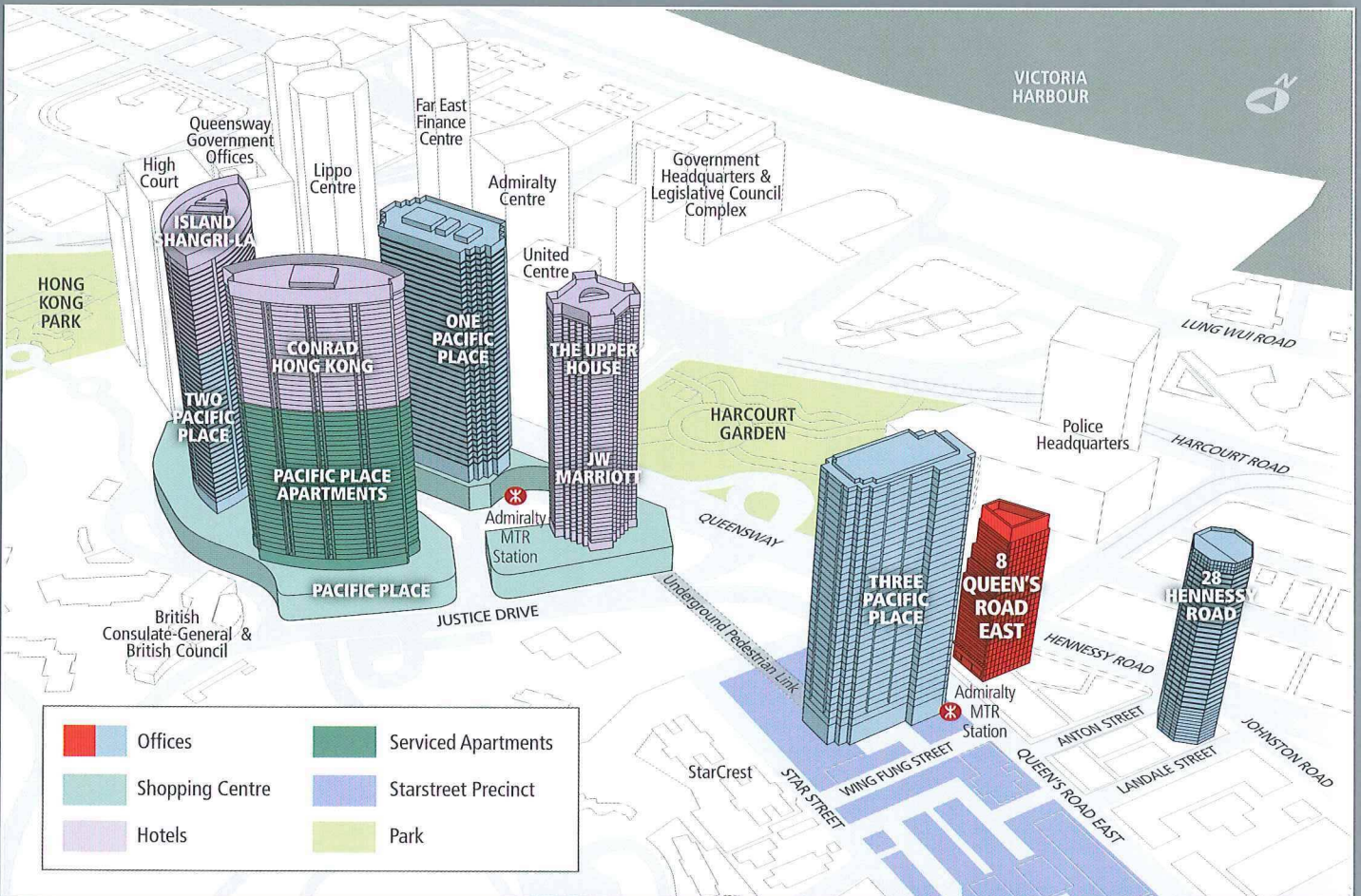


# TYPICAL FLOOR PLAN

- Lettable Floor Area:  
Approx. 2,744 - 3,854 sq ft (255 - 358 sqm)
- Net Floor Area:  
Approx. 2,220 - 3,256 sq ft (206 - 303 sqm)



# LOCATION MAP



Disclaimer: Please note that all information contained in this document is correct at time of going to print. These are for your reference and identification only. There may be technical variations due to, amongst other reasons, site constraints which can only be verified on site.