

ACCESSIBILITY

Close proximity to Admiralty MTR Station

TYPICAL LETTABLE FLOOR AREA

Approx. 4,900 sq ft (460 sqm)

NO. OF OFFICE FLOORS

24

TYPICAL FINISHED FLOOR TO FALSE CEILING HEIGHT

Approx. 2.85 m (9 ft 4 in)

RAISED FLOOR VOID

Approx. 150 mm (6 in) with 100 mm (4 in) clear void

FLOOR LOADING

Approx. 5 kPa (100 lbs / sq ft)

TRUNKING

Three-compartment floor and ceiling trunking

24-HOUR ACCESS

Octopus Card Key system incorporated with the passenger lifts for controlling access to each office floor after office hours

AIR-CONDITIONING

Variable Air Volume system (VAV) with Direct Digital Control (DDC)

LIFTS

4 high speed passenger lifts

TENANTS' STANDBY ELECTRICAL PROVISION

A 500 kVA emergency generator is provided for tenants' essential applications and equipment

COMPUTER ROOM COOLING

Dedicated 24-hour chilled water supply with backup generator

TELECOMMUNICATIONS PROVISIONS

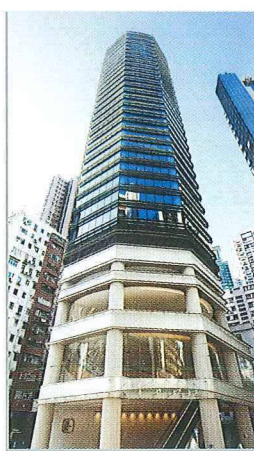
- Dual lead-ins and risers
- Full Cat.5e and fibre optic cabling
- Cable containment for tenants' inter-floor cabling
- Free choice of FTNS operators
- Access to SMATV, cable TV and broadband Internet services

ACCESSIBLE CAR PARKING SPACES

Available at Three Pacific Place

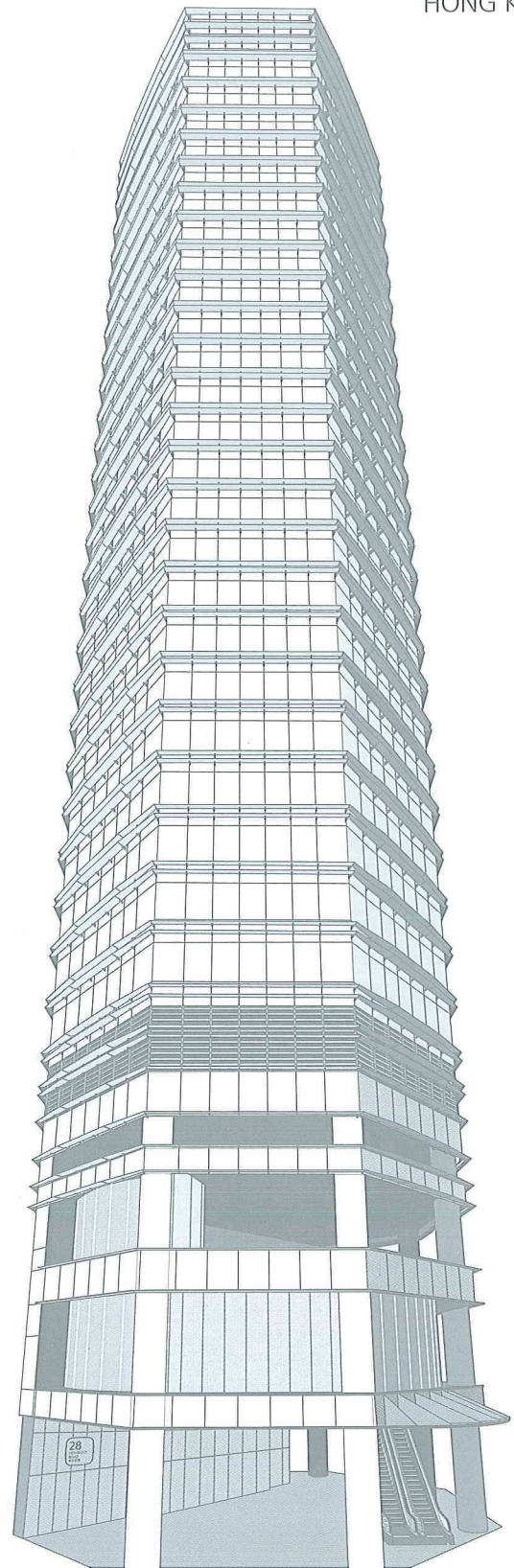
ENVIRONMENTAL RATING

BEAM (Building Environmental Assessment Method)
Rating: PLATINUM

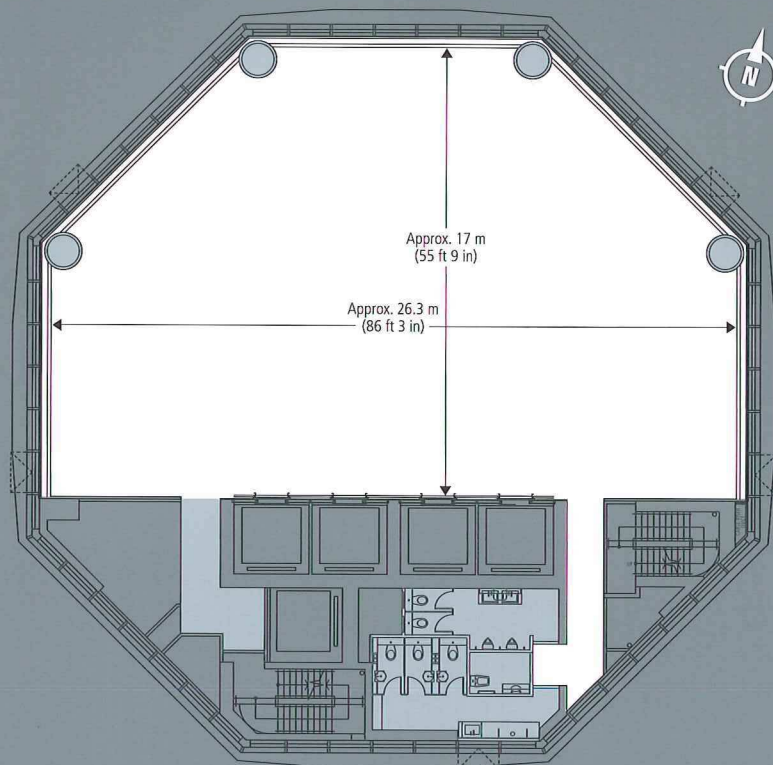


28 HENNESSY ROAD

HONG KONG

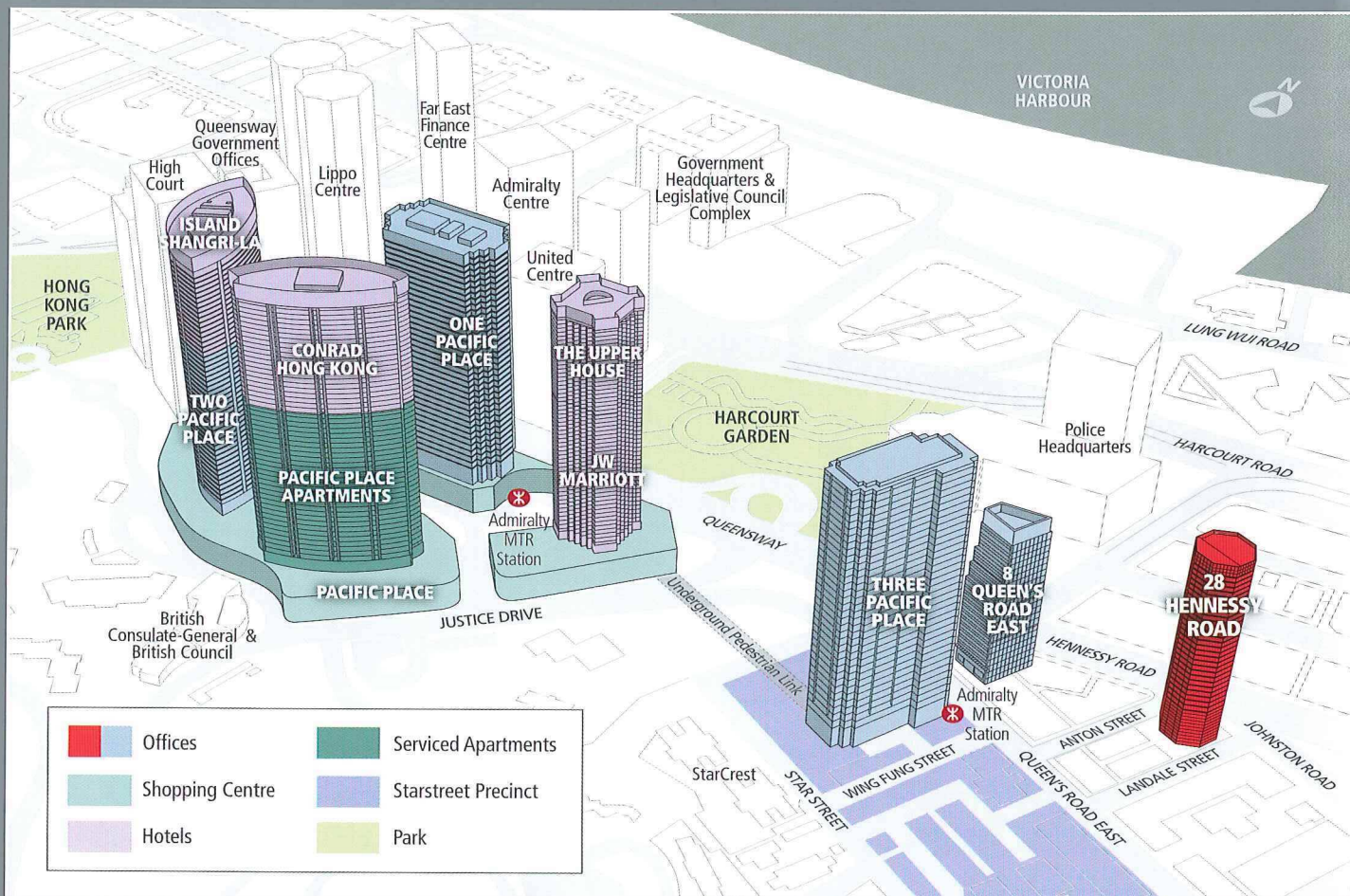


TYPICAL FLOOR PLAN



- Lettable Floor Area : Approx. 4,900 sq ft (460 sqm)
- Net Floor Area : Approx. 4,250 sq ft (395 sqm)

LOCATION MAP



Disclaimer: Please note that all information contained in this document is correct at time of going to print. These are for your reference and identification only. There may be technical variations due to, amongst other reasons, site constraints which can only be verified on site.