

**ACCESSIBILITY**

Directly connected to Admiralty MTR Station

TYPICAL LETTABLE FLOOR AREA

Approx. 15,000 - 16,700 sq ft (1,390 - 1,550 sqm)

NO. OF OFFICE FLOORS

34

TYPICAL FINISHED FLOOR TO FALSE CEILING HEIGHT

Approx. 2.75 m (9 ft)

RAISED FLOOR VOID (CLEAR)

Approx. 150 mm (6 in)

FLOOR LOADING

Approx. 4 kPa (80 lbs / sq ft)

TRUNKING

Three-compartment under-floor trunking

24-HOUR ACCESS

Card Key system incorporated with the passenger lifts for controlling access to each office floor after office hours

AIR-CONDITIONING

Variable Air Volume system (VAV) with Direct Digital Control (DDC) and perimeter heating

LIFTS

16 passenger lifts and 2 service lifts

TENANTS' STANDBY ELECTRICAL PROVISION

Three 800 kVA emergency generators are provided for tenants' essential applications and equipment

COMPUTER ROOM COOLING

Dedicated 24-hour chilled water supply with backup generator

TELECOMMUNICATIONS PROVISIONS

- Dual lead-ins and risers
- Full Cat.5 and fibre optic cabling
- Access to SMATV, cable TV and broadband Internet services
- Free choice of FTNS operators
- Provisions for tenants' inter-floor cabling
- Comprehensive indoor mobile coverage

ACCESSIBLE CAR PARKING SPACES

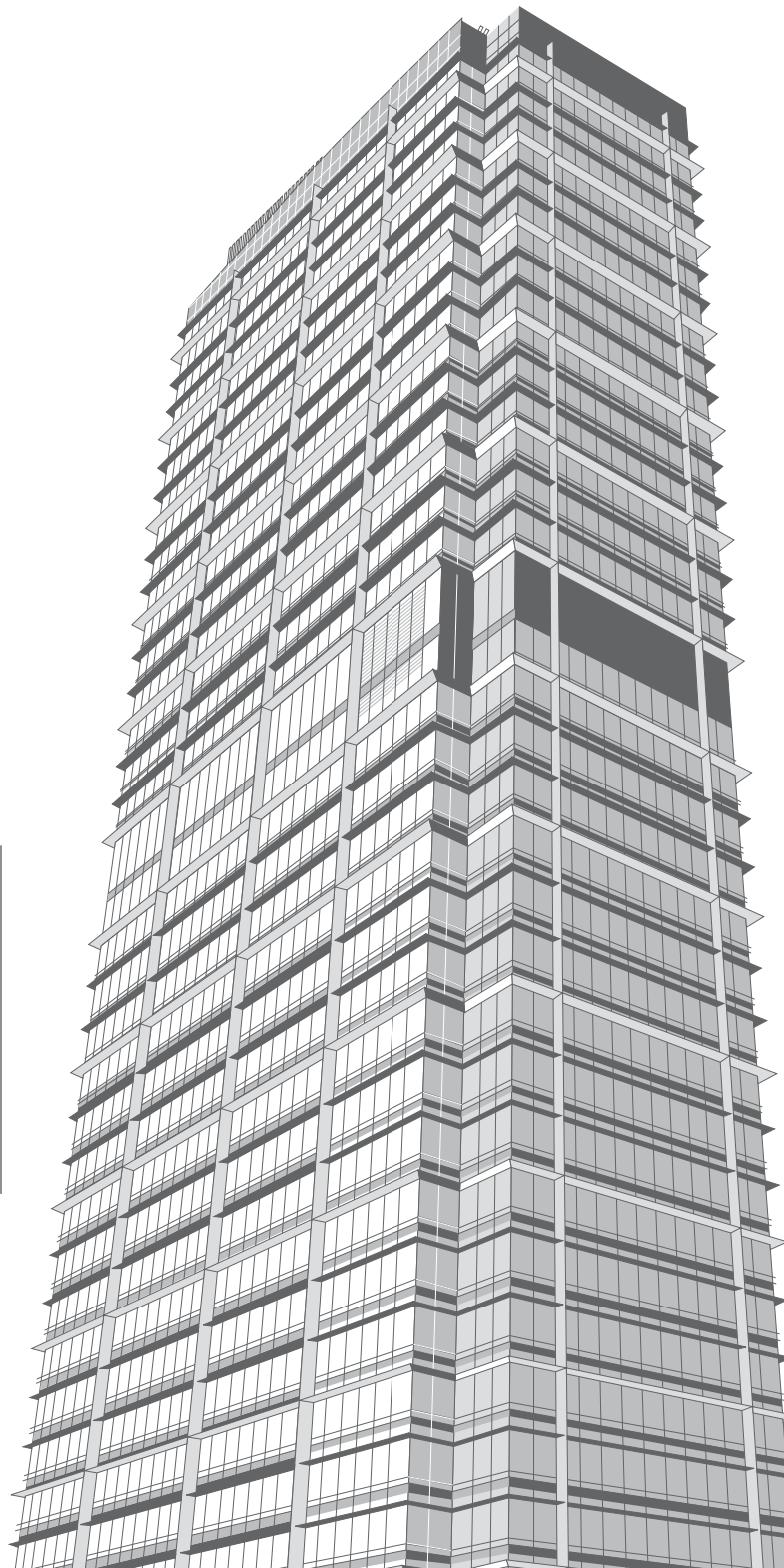
110

ENVIRONMENTAL RATING

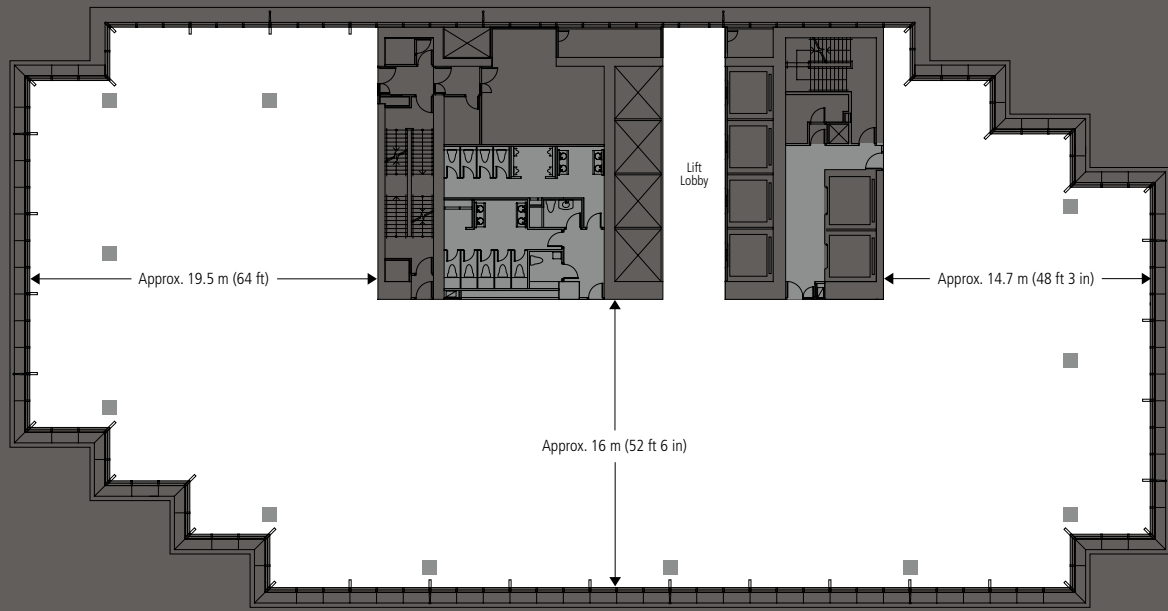
BEAM (Building Environmental Assessment Method)
Rating: PLATINUM

THREE PACIFIC PLACE

1 QUEEN'S ROAD EAST, HONG KONG

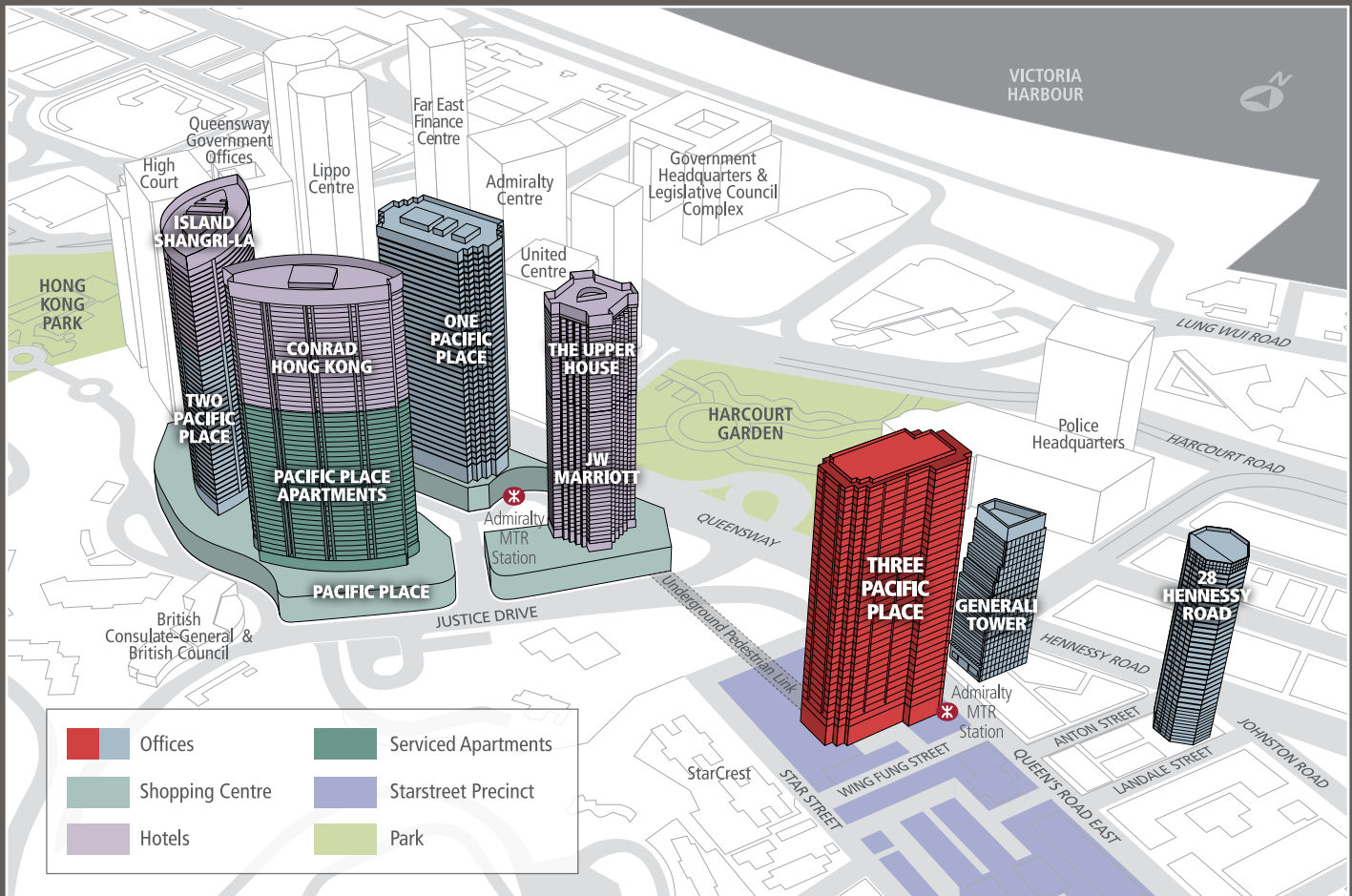


TYPICAL FLOOR PLAN



- Lettable Floor Area : Approx. 16,300 sq ft (1,510 sqm)
- Net Floor Area : Approx. 15,150 sq ft (1,410 sqm)

LOCATION MAP



Disclaimer: Please note that all information contained in this document is correct at time of going to print. These are for your reference and identification only. There may be technical variations due to, amongst other reasons, site constraints which can only be verified on site.